

COVENTRY TOWNE PLAZA

Coventry Township/Akron, Ohio



3333 Manchester Road
Akron, OH 44319

NOW LEASING

PROPERTY DESCRIPTION

- 105,000/SF grocery-anchored shopping center located on Manchester Road (SR 93), South of SR 224 with 24,480 vpd
- Located in the retail trade area of Portage Lakes serving the Coventry Twp, New Franklin, East Barberton, and West Green communities of SW Akron and SW Summit County
- Join Harbor Freight Tools, Save-a-Lot, Dollar General and other thriving businesses located in the heart of Portage Lakes
- Great visibility, convenient parking, signalized access, and a large roadside tenant pylon sign
- Outparcel available for lease or build to suit

DEMOGRAPHICS

	1 Mile	3 Mile	5 Mile
Population	3,056	53,606	139,963
Households	1,375	22,913	57,303
Avg. HH Income	\$75,569	\$64,211	\$59,881

CONTACT:

Joe Del Balso

jdelbalso@paranrealtygroup.com

216.921.5663 ext. 102

Howard Forman

hforman@paranrealtygroup.com

216.921.5663 ext. 105

WWW.PARANREALTYGROUP.COM

2025 Paran Realty Group. All rights reserved.

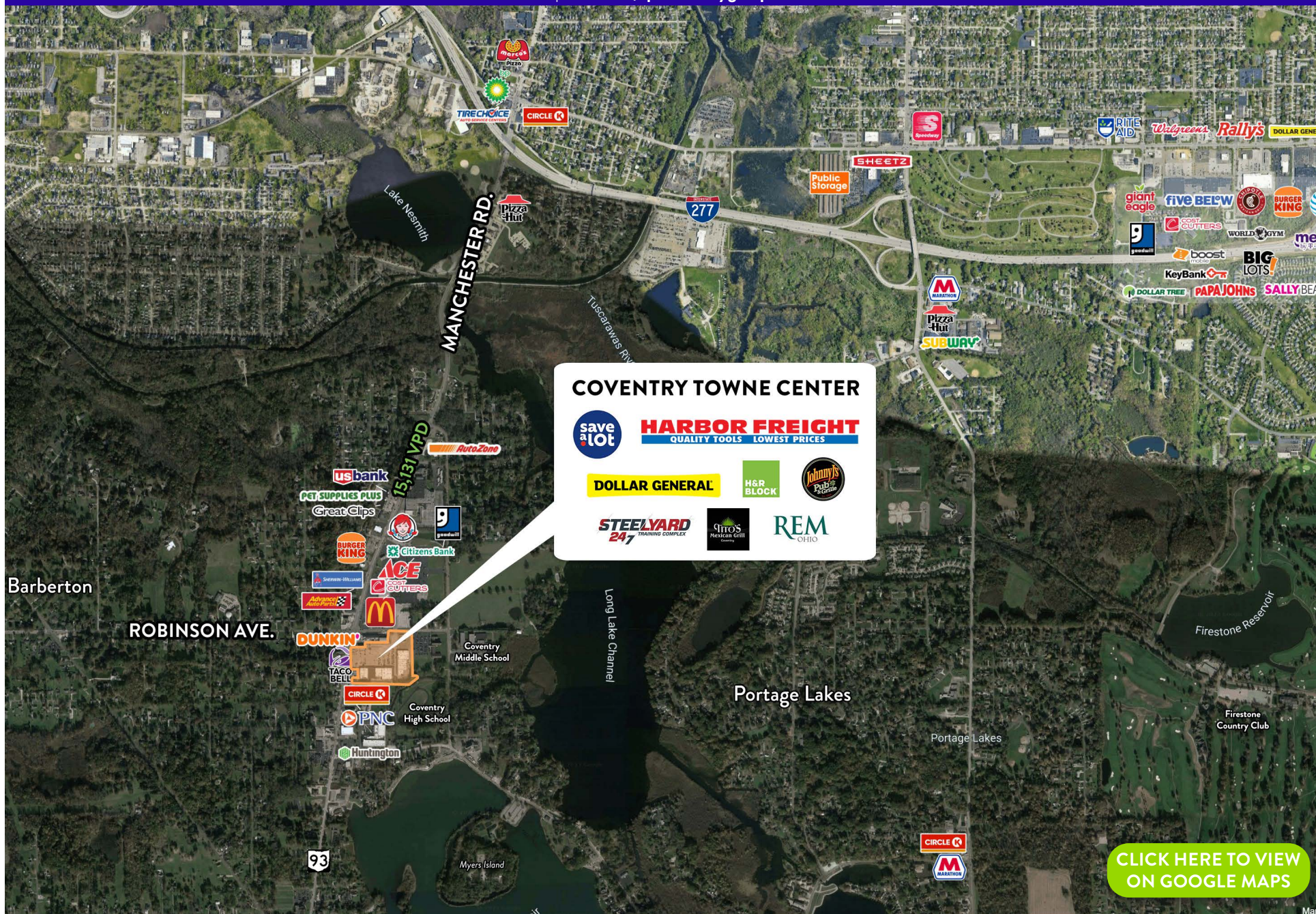
Paran Realty Group | 2720 Van Aken Blvd. | Suite 200 | Cleveland, OH 44120
P: 216.921.5663 or 800.888.5663 | info@paranrealtygroup.com

CONTACT: Joe Del Balso 216.921.5663 or 800.888.5663 x102 | jdelbalso@paranrealtygroup.com
Howard Forman 216.921.5663 or 800.888.5663 x105 | hforman@paranrealtygroup.com



The information presented here is deemed to be accurate, but has not been independently verified. We make no guarantee, warranty or representation as to accuracy. It is the buyer or lessee's responsibility to independently confirm accuracy and completeness.

CONTACT: Joe Del Balso 216.921.5663 or 800.888.5663 x102 | jdelbalso@paranrealtygroup.com
Howard Forman 216.921.5663 or 800.888.5663 x105 | hforman@paranrealtygroup.com



The information presented here is deemed to be accurate, but has not been independently verified. We make no guarantee, warranty or representation as to accuracy. It is the buyer or lessee's responsibility to independently confirm accuracy and completeness.